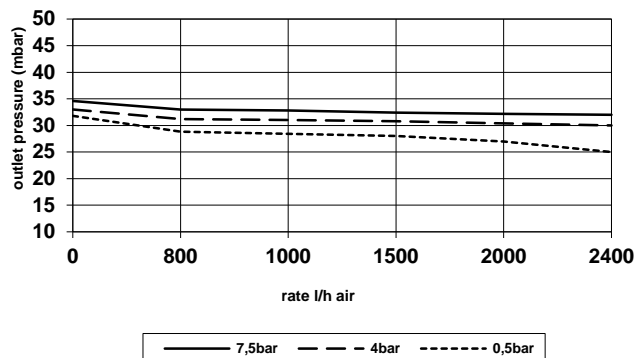




Reg. BP 4 kg/h mod. LPZ 4-V (test at 30 mbar)



The Mini-kits is a product designed for the realization of a supply system with several LPG Gas cylinders, already equipped with a Pressure Regulator, able to satisfy most of the gas distribution systems for domestic use.

The valves are equipped with a non-return valve that prevents the transfer of the Gas from the full cylinder in operation, to the cylinder already used (empty), in case of failure to close the relative valve.

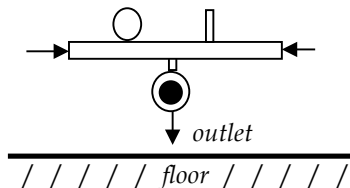
*(When commissioning a new cylinder, close the valve on the exhausted cylinder and the corresponding valve on the Mini-kits).*

**TECHNICAL CHARACTERISTICS**

- Capacity of regulator : 4 kg/h
- Calibration of regulator : 30 mbar
- (Possible calibration between 20 to 60 mbar)*
- Inlet pressure : 0,5 ÷ 11 bar
- (Maximum allowable pressure 16 bar)*
- Operating temperature : -20° ÷ +50° C
- Inlet (valves) : Male Thread W 20x1/14" LH
- Outlet (regulator) : Female Thread G 3/8"

**INSTRUCTIONS FOR USE AND INSTALLATION**

To guarantee correct operation and maintain the longevity of the Regulator, we recommend installing it with the outlet facing downwards.



The connection between the valves of the cylinders and the valves of the Mini-kits unit must be done through the use of suitable flexible pipes. Before connecting the hoses to the system, always check the expiration date as well as their good condition.

Check that the hose couplings are equipped with the proper seals and their good condition *(to be replaced at each tank change)*.

During assembly, make sure that the flexible hoses do not form choked bends or abnormal bends that could damage their integrity *(during this operation, hold the hoses in place using the special key)*.

For the connection between the Regulator and the Gas appliances it is suggested to use a copper pipe of adequate section. Any throttling or crushing of the piping will reduce the flow of gas.

When the system is completed, check for gas leaks from the junction points Use only specific products *(spray foam)* or soapy water.

**The use of flames is strictly prohibited !**

Do not use the appliance until any gas leaks have been deleted !

Regulator is calibrated at a pressure of 30 mbar at the nominal flow rate of 4 kg/h.

If necessary, it is possible to adjust the outlet pressure by acting on the internal adjustment ring nut, after having removed the protection cap.

To increase the outlet pressure, screw the ring nut clockwise, to reduce the pressure, unscrew it counterclockwise.

At the end of the calibration set the protection cap again.

**Installation of tanks and Mini-kits in closed rooms is prohibited!**

**REGULATOR MATERIALS**

- Body and Cover in Zinc alloy (Zamak).
- Body protected by galvanically Zink treatment.
- Cover protected by epoxy powder coating.
- NBR rubber component in accordance to EN 549.

**MINI-KITS GROUP MATERIALS**

- Group, knobs, pistons, bushing and rivets are in Brass.
- Spheres are in steel.
- O-Rings in NBR rubber in accordance to EN 549.
- Sealing pads in teflon.

**NOTES**

- On request, the outlet pressures can be customized.
- Do not use the regulator for pressures other than those indicated.
- The declared calibration and tightness are checked in production.