



VALVOLE SISMICHE PER IL GAS

GAS SEISMIC VALVES/ EARTHQUAKE VALVES



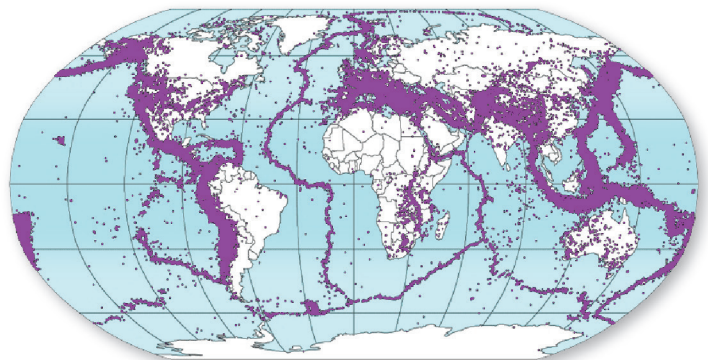
S-TECH con oltre 40 anni di esperienza nella progettazione, produzione e distribuzione di apparecchiature tecniche per la distribuzione del gas, ha sviluppato una famiglia di prodotti destinati a garantire la sicurezza degli ambienti civili e industriali in caso di eventi disastrosi, come terremoti, ma anche eventi straordinari come quelli climatici che comportano sempre più la distruzione e l'interruzione dei pubblici servizi.

S-TECH with over 40 years of experience in the design, production and distribution of technical equipments for the gas distribution has developed a family of products intended to ensure the safety of civil and industrial users in the event of disastrous events, such as earthquakes, but also extraordinary events such as climatic ones that increasingly involve the destruction and interruption of public services.

Rischio sismico nel mondo

Seismic risk in the World

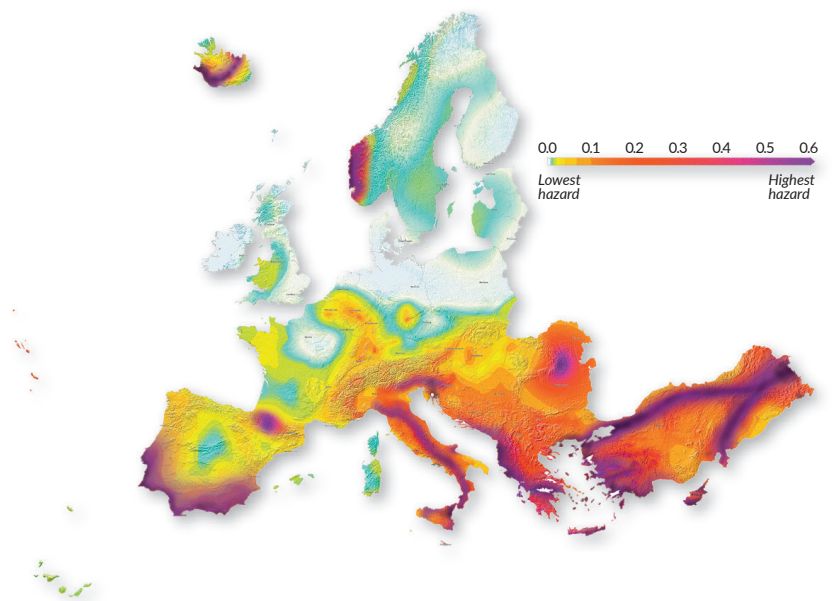
Tagikistan	Indonesia
Chile	Philippines
Iran	Georgia
Nepal	Iceland
Japan	Costa Rica
New Zeland	Ecuador
Peru	Colombia
Alaska	Argentina
California	Afghanistan
Mexico	New Guinea



Aree a forte rischio sismico in Europa

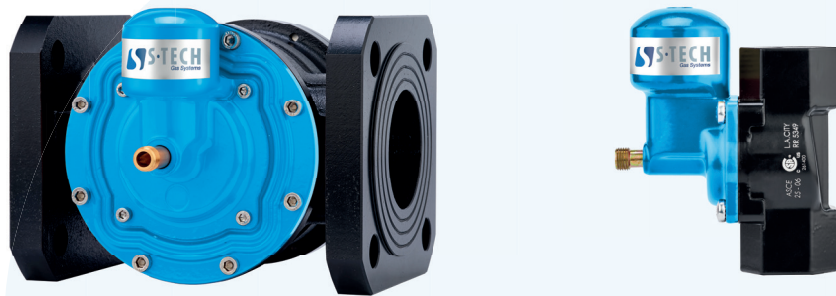
Seismic risk areas in Europe

Greece	Slovenia
Turkey	Croatia
Italy	Iceland
Albania	Austria
Serbia	Germany
Montenegro	Switzerland
Romania	Ucraina
Norway (coast)	Spain
Southern France	Belgium
Portugal	Sweden



VALVOLE - SV

SV-VALVES



INFORMAZIONI GENERALI SUL PRODOTTO

Le valvole sismiche di **S-TECH** sono dispositivi progettati per interrompere automaticamente il flusso di gas in situazioni di terremoti alle condizioni definite nello standard tecnico ASCE 25-16 e dalle direttive PED, ATEX oltre che dalle norme tecniche ANSI Z21. 21-2005, CSA 6.5-2005, CR90 - 002.

Si tratta di un dispositivo completamente meccanico che non ha quindi la necessità di alcuna alimentazione elettrica.

Quando il dispositivo è soggetto a vibrazioni sismiche come definito nella normativa tecnica, la valvola interviene automaticamente ed esegue l'interruzione del flusso del gas.

Dopo l'intervento di chiusura automatica, la valvola può essere riarmata manualmente. Essa rimane chiusa fino a quando non viene riarmata permettendo nuovamente il flusso del gas.

PRODUCT INFORMATION:

S-TECH seismic valves are devices designed to automatically shut off the gas flow in earthquake situations under the conditions defined in the technical standard ASCE25-16, according to PED, ATEX directives and technical standards ANSI Z21. 21-2005, CSA 6.5-2005, CR90 - 002.

It is a completely mechanical device which therefore does not require any electrical power supply.

When the device is subject to seismic vibrations as defined in the technical standards, the SV valve automatically cut-off the gas flow.

After the automatic closure, the valve can be reset manually, and it remains closed until it is reset allowing the flow of gas.

Dati tecnici

Technical features:

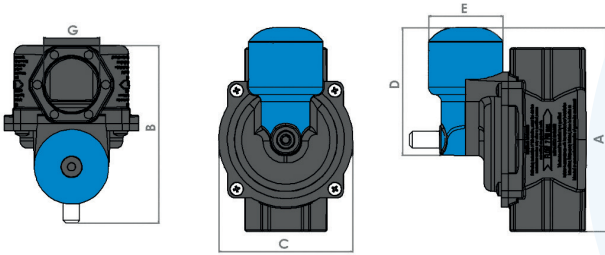
Grandezza corpo Body size	½" / ¾" / 1" / 1¼" / 1½" / 2" / 2½" / 3" / 4" / 6" / 8" / 10"
Connessioni Connections	Flangiate UNI PN16- filettate EN10226- filettate NPT Flanged UNI PN 16 - threaded EN10226 - threaded NPT
Funzionamento Work position	Verticale & Orizzontale Vertical & Horizontal
Campo pressione in uscita Outlet pressure range	0-0,5 bar (0-7 PSI) / 0-4 bar (0-60 PSI)
Pressione di progetto Design pressure	0,75 bar (10 PSI) / 6 bar (90 PSI)
Gas utilizzabili Acceptable gases	Metano, gas città, gpl, azoto, aria, qualsiasi gas non corrosivo Natural gas, town gas, lpg, nitrogen, air, any non-corrosive gas
Temperatura ambiente Operating temperature	-23°C ÷ +66 °C (-10°F ÷ +150°F)
Norme di progetto-Omologazioni Design standards-Approvals	CE mark according PED+ATEX directives+ASCE 25-16 CSA mark according ASCE 25-16+ANSI Z21.21-2005, CR90-002



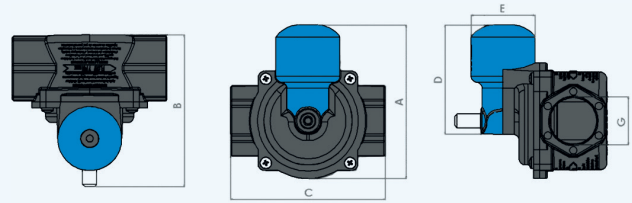
Modello/Model	Installazione Work. Position	DN	Pollici Inch	P. Max. d'esercizio Max. working pressure	Attacchi Connections	Portata Capacity kW
SV-VT15C-05 (compact)	Vertical	15	1/2"	500 mbar (7 PSIG)	Threaded EN10226/NPT	146,50
SV-HT15C-05 (compact)	Horizontal	15	1/2"	500 mbar (7 PSIG)	Threaded EN10226/NPT	146,50
SV-VT15C-4 (compact)	Vertical	15	1/2"	4 bar (60 PSIG)	Threaded EN10226/NPT	146,50
SV-HT15C-4 (compact)	Horizontal	15	1/2"	4 bar (60 PSIG)	Threaded EN10226/NPT	146,50
SV-VT20C-05 (compact)	Vertical	20	3/4"	500 mbar (7 PSIG)	Threaded EN10226/NPT	146,50
SV-HT20C-05 (compact)	Horizontal	20	3/4"	500 mbar (7 PSIG)	Threaded EN10226/NPT	146,50
SV-VT20C-4 (compact)	Vertical	20	3/4"	4 bar (60 PSIG)	Threaded EN10226/NPT	146,50
SV-HT20C-4 (compact)	Horizontal	20	3/4"	4 bar (60 PSIG)	Threaded EN10226/NPT	146,50
SV-VT25C-05 (compact)	Vertical	25	1"	500 mbar (7 PSIG)	Threaded EN10226/NPT	146,50
SV-HT25C-05 (compact)	Horizontal	25	1"	500 mbar (7 PSIG)	Threaded EN10226/NPT	146,50
SV-VT25C-4 (compact)	Vertical	25	1"	4 bar (60 PSIG)	Threaded EN10226/NPT	146,50
SV-HT25C-4 (compact)	Horizontal	25	1"	4 bar (60 PSIG)	Threaded EN10226/NPT	146,50
SV-VT20-05	Vertical	20	3/4"	500 mbar (7 PSIG)	Threaded EN10226/NPT	227,10
SV-HT20-05	Horizontal	20	3/4"	500 mbar (7 PSIG)	Threaded EN10226/NPT	227,10
SV-VT20-4	Vertical	20	3/4"	4 bar (60 PSIG)	Threaded EN10226/NPT	227,10
SV-HT20-4	Horizontal	20	3/4"	4 bar (60 PSIG)	Threaded EN10226/NPT	227,10
SV-VT25-05	Vertical	25	1"	500 mbar (7 PSIG)	Threaded EN10226/NPT	1000
SV-HT25-05	Horizontal	25	1"	500 mbar (7 PSIG)	Threaded EN10226/NPT	1000
SV-VT25-4	Vertical	25	1"	4 bar (60 PSIG)	Threaded EN10226/NPT	1000
SV-HT25-4	Horizontal	25	1"	4 bar (60 PSIG)	Threaded EN10226/NPT	1000
SV-VT32-05	Vertical	32	1 1/4"	500 mbar (7 PSIG)	Threaded EN10226/NPT	1690
SV-HT32-05	Horizontal	32	1 1/4"	500 mbar (7 PSIG)	Threaded EN10226/NPT	1690
SV-VT32-4	Vertical	32	1 1/4"	4 bar (60 PSIG)	Threaded EN10226/NPT	1690
SV-HT32-4	Horizontal	32	1 1/4"	4 bar (60 PSIG)	Threaded EN10226/NPT	1690
SV-VT40-05	Vertical	40	1 1/2"	500 mbar (7 PSIG)	Threaded EN10226/NPT	2470
SV-HT40-05	Horizontal	40	1 1/2"	500 mbar (7 PSIG)	Threaded EN10226/NPT	2470
SV-VT40-4	Vertical	40	1 1/2"	4 bar (60 PSIG)	Threaded EN10226/NPT	2470
SV-HT40-4	Horizontal	40	1 1/2"	4 bar (60 PSIG)	Threaded EN10226/NPT	2470
SV-VT50-05	Vertical	50	2"	500 mbar (7 PSIG)	Threaded EN10226/NPT	3100
SV-HT50-05	Horizontal	50	2"	500 mbar (7 PSIG)	Threaded EN10226/NPT	3100
SV-VT50-4	Vertical	50	2"	4 bar (60 PSIG)	Threaded EN10226/NPT	3100
SV-HT50-4	Horizontal	50	2"	4 bar (60 PSIG)	Threaded EN10226/NPT	3100
SV-VF50-05	Vertical	50	2"	500 mbar (7 PSIG)	Flanged UNI PN 16	5570
SV-HF50-05	Horizontal	50	2"	500 mbar (7 PSIG)	Flanged UNI PN 16	5570
SV-VF50-4	Vertical	50	2"	4 bar (60 PSIG)	Flanged UNI PN 16	5570
SV-HF50-4	Horizontal	50	2"	4 bar (60 PSIG)	Flanged UNI PN 16	5570
SV-VF65-05	Vertical	65	2 1/2"	500 mbar (7 PSIG)	Flanged UNI PN 16	5570
SV-HF65-05	Horizontal	65	2 1/2"	500 mbar (7 PSIG)	Flanged UNI PN 16	5570
SV-VF65-4	Vertical	65	2 1/2"	4 bar (60 PSIG)	Flanged UNI PN 16	5570
SV-HF65-4	Horizontal	65	2 1/2"	4 bar (60 PSIG)	Flanged UNI PN 16	5570
SV-VF80-4	Vertical	80	3"	4 bar (60 PSIG)	Flanged UNI PN 16	6275
SV-HF80-4	Horizontal	80	3"	4 bar (60 PSIG)	Flanged UNI PN 16	6275
SV-VF100-4	Vertical	100	4"	4 bar (60 PSIG)	Flanged UNI PN 16	9650
SV-HF100-4	Horizontal	100	4"	4 bar (60 PSIG)	Flanged UNI PN 16	9650
SV-VF150-4	Vertical	150	6"	4 bar (60 PSIG)	Flanged UNI PN 16	12000
SV-HF150-4	Horizontal	150	6"	4 bar (60 PSIG)	Flanged UNI PN 16	12000
SV-VF200-4	Vertical	200	8"	4 bar (60 PSIG)	Flanged UNI PN 16	15000
SV-HF200-4	Horizontal	200	8"	4 bar (60 PSIG)	Flanged UNI PN 16	15000
SV-VF250-4	Vertical	250	10"	4 bar (60 PSIG)	Flanged UNI PN 16	18000
SV-HF250-4	Horizontal	250	10"	4 bar (60 PSIG)	Flanged UNI PN 16	18000

DIMENSIONI DELLE VALVOLE FILETTATE OVERALL DIMENSIONS OF THREADED VERSION

VERTICAL INSTALLATION



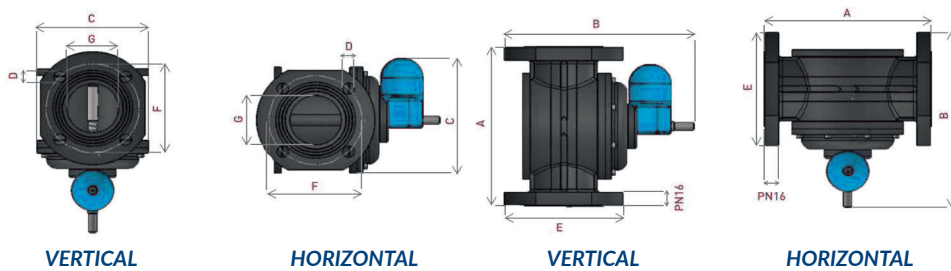
HORIZONTAL INSTALLATION



Model	DN	Working Position	Weight (kg)	DIMENSIONS (mm)				
				A	B	C	D	E
Operating Pressure 500 mbar (7 PSI)								
SV-VT20C-05	20	Vertical	0,536	110	94,5	53	70,5	42
SV-HT20C-05	20	Horizontal	0,536	89,5	94,5	94	70,5	42
SV-VT25C-05	25	Vertical	0,498	110	94,5	53	70,5	42
SV-HT25C-05	25	Horizontal	0,498	89,5	94,5	94	70,5	42
SV-VT20-05	20	Vertical	1,156	141,5	124	94	89,5	52
SV-VT25-05	25	Vertical	1,112	141,5	124	94	89,5	52
SV-VT32-05	32	Vertical	1,032	141,5	124	94	89,5	52
SV-HT32-05	32	Horizontal	1,032	125	124	126	89,5	52
SV-VT40-05	40	Vertical	1,508	142,5	145	94	89,5	52
SV-HT40-05	40	Horizontal	1,508	125	145	128	89,5	52
SV-VT50-05	50	Vertical	1,348	142,5	145	94	89,5	52
SV-HT50-05	50	Horizontal	1,348	125	145	128	89,5	52
Operating Pressure 4 bar (60 PSI)								
SV-VT25-4	25	Vertical	1,142	141,5	124	94	89,5	52
SV-HT25-05	25	Horizontal	1,142	125	124	126	89,5	52
SV-VT40-4	40	Vertical	1,538	142,5	145	94	89,5	52
SV-HT40-4	40	Horizontal	1,538	125	145	128	89,5	52
SV-VT50-4	50	Vertical	1,376	142,5	145	94	89,5	52
SV-HT50-4	50	Horizontal	1,376	125	145	128	89,5	52

* su richiesta connessioni NPT / NPT connections on request

DIMENSIONI DELLE VALVOLE FLANGIATE OVERALL DIMENSIONS OF FLANGED VERSION



VERTICAL

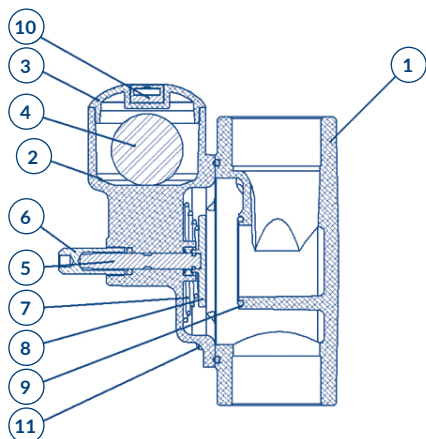
HORIZONTAL

VERTICAL

HORIZONTAL

Model	DN	Working Position	Weight (kg)	DIMENSIONS (mm)						
				A	B	C	D	E	F	G
Operating Pressure 4 bar (60 PSI)										
SV-VF50-4	50	Vertical	4,47	208	216	150	18	150	124	65
SV-HF50-4	50	Horizontal	4,47	208	216	153	18	150	124	65
SV-VF65-4	65	Vertical	4,72	261	296	174	18	185	145	80
SV-HF65-4	65	Horizontal	4,72	261	296	188	18	185	145	80
SV-VF80-4	80	Vertical	8,30	261	304	180	18	200	160	80
SV-HF80-4	80	Horizontal	8,30	261	304	191	18	200	160	80
SV-VF100-4	100	Vertical	10,30	327	327	200	18	220	180	100
SV-HF100-4	100	Horizontal	10,30	327	327	201	18	220	180	100
SV-VF150-4	150	Vertical	24,21	390	390	325	22	285	236	150
SV-HF150-4	150	Horizontal	24,21	390	390	325	22	285	236	150
SV-VF200-4	200	Vertical	40,27	470	470	360	22	340	300	200
SV-HF200-4	200	Horizontal	40,27	470	470	360	22	340	300	200
SV-VF250-4	250	Vertical	53,00	554	588	412	22	390	355	250
SV-HF250-4	250	Horizontal	53,00	554	588	412	22	390	355	250

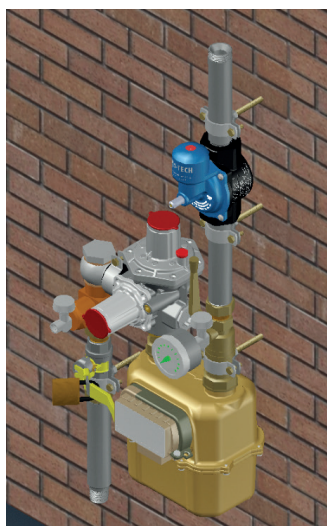
COMPONENTI INTERNI INTERNAL COMPONENTS



POS.	Nome Componente / Part Name	POS.	Nome Componente / Part Name
1	Corpo valvola / Body valve	7	Molla / Spring
2	Sensore involucro / Sensor enclosure	8	Sede / seat
3	Sensore Coperchio / Sensor cover	9	O-ring
4	Sfera in acciaio inossidabile / Ball in stainless steel	10	Livella a bolla/Bubble vial
5	Stelo / Spindle	11	Screws
6	Riarmo / Knob Reset		

INSTALLAZIONI TIPICHE TIPYCAL INSTALLATION

INSTALLATION VERTICALE VERTICAL INSTALLATION



INSTALLAZIONE ORIZZONTALE HORIZONTAL INSTALLATION

