

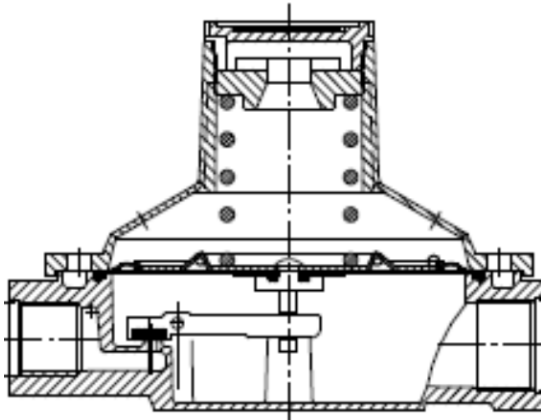


SISTEMI E COMPONENTI PER IMPIANTI IDROTERMICI

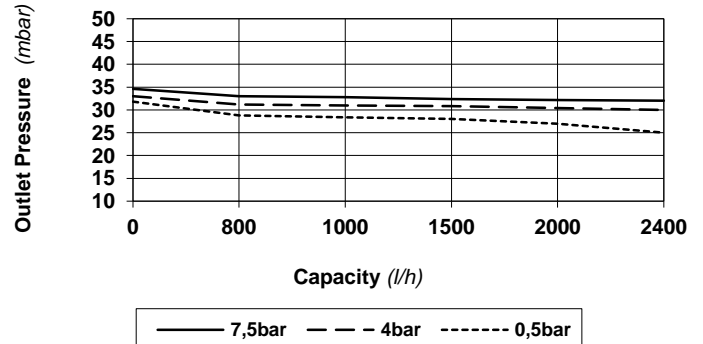
LOW PRESSURE REGULATOR Mod. LPZ 4 V FOR INDUSTRIAL AND DOMESTIC USE

SERIE :

E 600



Reg. 4 kg/h - mod. LPZ 4 V
(test at 30 mbar)



TECHNICAL FEATURES

LPG low pressure regulator for Butane, Propane and their mixtures.

Capacity : 4 kg/h

Factory calibration : 30 mbar

(Adjustable from 20 to 60 mbar)

Supply pressure : 0,5 ÷ 11 bar

(Maximum inlet pressure 16 bar)

Working temperature range : -20° ÷ +50° C

Inlet : Thread Female G 1/4" (or connecting for bottle)

Outlet : Thread Female G 3/8" (or G 1/4")

HOW TO USE IT

This regulator can be used as 1st or 2nd stage:

1st stage : the regulator is connected directly to a LPG gas cylinder through its swivel connection (*make sure of gasket's present and its good condition*) and, then, supplied from the direct pressure of the gas.

Before starting and operating the system check that there are no leaks in the system connections.

2nd stage : the regulator is connected after a 1st. stage regulator (or an high pressure regulator, or an automatic changeover), which supplies the 2nd. stage regulator, generally to a pressure of 1,5 bar.

In these conditions the regulator 2nd stage is supplied with a stabilized pressure variable between 0,5 bar and 2 bar (Max).

The connection between the 1st. Stage regulator and the 2nd. Stage regulator can also be direct, by the use of a threaded nipple.

INSTALLATION INSTRUCTION

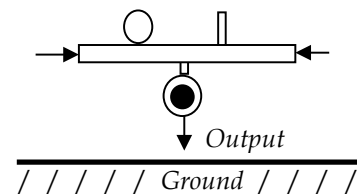
The regulator must be installed by controlling the flow direction (*see the arrow*).

Before starting and operating the system it is important to verify it that is cleaned from any residues (*welding, residual filing, etc.*) that could damage the regulator or gas appliances.

The check for lacks (*in the system connections*) must be performed only with specific product (*spray foam*).

NEVER USE FLAMES !

Make sure that the vent hole in the cover be always clean and free.
To avoid possible malfunction of the regulator is recommended vertical installation, with the output facing down.



CALIBRATION

The regulator is calibrated to an outlet pressure of 30 mbar to the capacity of 4 kg/h from the production.

If necessary, it is possible to adjust the setting by turning the internal adjustment screw, after removing the protective cap from the cover.

To increase the outlet pressure screw clockwise, to decrease the outlet pressure unscrew counterclockwise.

It is recommended to relocate the protective cap at the end of calibration.

MATERIALS

Regulator Body and Cover in Zink alloy (*Zamak*).

Regulator Body protected by galvanic Zink treatment.

Regulator Cover protected by epoxy powder coating.

NBR rubber components in accordance to EN 549.

NOTES

Upon request, outlet pressure can be customized.

Do not use the regulator to different pressures from those indicated.

Calibration and tightness are verified in production.

MADE IN ITALY

The manufacturer decline any responsibility for any misuse of the device or use under different conditions of that stated in the product instructions.