



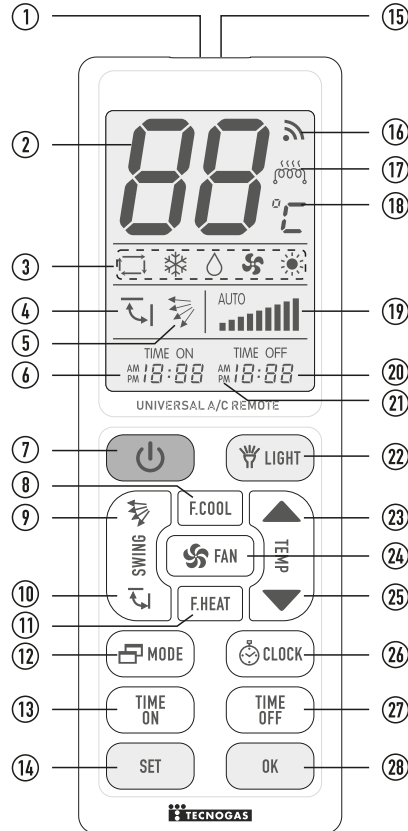
UNIVERSAL AIR CONDITIONER  
REMOTE CONTROL

## USER INSTRUCTION

### DESCRIPTION

Elegant universal A/C remote control with an LED light and extra-large backlight LCD screen. Due to the huge code base, it is compatible with most of the new and old models of the most brands of air conditioners in the market. With a simple and easy setup, the large buttons are more ergonomically designed. The universal remote control has a high-end design panel and it supports more functions of original remotes. There is no need to reset the remote control after replacing batteries thanks to the automatic power-off memory feature. It will give you an amazing experience and let you enjoy the smart life initiated from the new technology!

### COMPONENTS



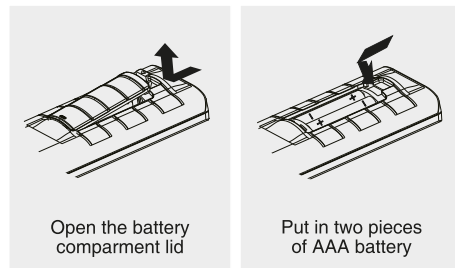
### COMPONENTS:

- 1: Infrared Signal Transmitter Port
- 2: Temperature Display
- 3: Mode Option (Auto/Cooling/Dehumidifying/Ventilation/Heating)
- 4: Automatic Wind Direction
- 5: Manual Wind Direction
- 6: Timer ON and Clock Display
- 7: Power ON/OFF
- 8: Fast Cool
- 9: Manual Wind Direction
- 10: Automatic Wind Direction
- 11: Fast Heat
- 12: Change Mode
- 13: Timer On
- 14: Setting
- 15: LED Light
- 16: Signal Display
- 17: Electric Assisted Heating
- 18: Celsius Degree
- 19: Fan Speed Display
- 20: Timer OFF and Code Display
- 21: Code Lock Icon
- 22: LED Light
- 23: Temperature +
- 24: Fan Speed
- 25: Temperature -
- 26: Clock
- 27: Timer OFF
- 28: OK

### PRODUCT OPERATIONS

#### ● Installing the batteries

This remote control is operated by two pieces of AAA battery. It will be ready for use after batteries correctly installed. It is recommended that removing the batteries when you are not going to use it for a long time, just in case of any damage by battery leakage.



### SETUP METHODS

This product can be used directly for: GREE (YBOF2), Mitsubishi 388, Midea, Toshiba, Chunlan, Haier, HuaLing and so on. If it's not working, please try to do the setup with one of the methods below:

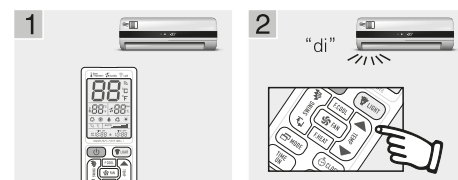
### METHOD A: BRAND BUTTON

Automatically searches only the codes relevant to your A/C brand

- Point the remote at your A/C and hold down the button which corresponds with your brand as per the "Corresponding buttons" below. For example, the TIME OFF button for Fujitsu A/Cs. If your brand is not listed, please refer to Method B & C.
- Immediately as your A/C responds (e.g. makes a beep sound) release the button. This may take up to approximately two minutes. If the remote does not control the AC properly or your A/C does not respond please refer to Method B & C.

#### Button Brand Corresponding Table

ON-OFF	TEMP	TEMP	FAN
GREE/HAIER	MIDEA/TOSHIBA/CHANGHONG	SHARP/KELON	MITSUBISHI/OTHERS
MODE	SWING	SWING	TIME ON
LG/SAMSUNG/MI/SKYWORTH	HITACHI/PANASONIC	SANYO/HISENSE	CHIGO/DAIKIN
TIME OFF	F.COOL FAST COOLING	F.HEAT FAST HEATING	
FUJITSU/CARRIER	CHUNLAN/AUX	SHINCO/AUCMA	



### METHOD B: AUTOMATIC SEARCH

Automatically search every code

- Point the remote at your A/C and hold down the "SET" button for approximately 6 seconds then release. You will then see the remote start to scroll through codes 001 to 999 in the bottom right hand corner of the screen.
- Hover your finger over the "OK" button and immediately as your A/C responds (e.g. makes a beep sound) press the "OK" button twice.
- If the remote does not function as expected, repeat steps 1 and 2 again and the remote will search for another code that connects the remote with your A/C. Otherwise try Method C.

### ADDITIONAL FUNCTIONS OF THE REMOTE CONTROL

#### ● RESTORE FACTORY SETTINGS

Press the "SET" + "FAN" buttons at the same time for approximately 3 seconds until the entire remote screen flashes to restore factory settings.

#### ● FAST COOLING AND HEATING FUNCTION FAST COOLING

Point the remote at the A/C and press the "F.COOL" button. This will change the mode to cooling, temperature to 21 degrees, fan speed to strong and direction to automatic.

**FAST HEATING**  
Point the remote at the A/C and press the "F.HEAT" button. This will change the mode to heating, temperature to 27 degrees, fan speed to strong and direction to automatic.

#### ● CLOCK FUNCTION

- Hold down the "CLOCK" button for approximately 3 seconds until the time on the screen starts flashing.
- Use the "TEMP+" and "TEMP-" buttons to adjust the time, please note if you hold down the button it will scroll faster.
- Press the "CLOCK" button to confirm the adjusted time.

#### ● TIMER FUNCTION

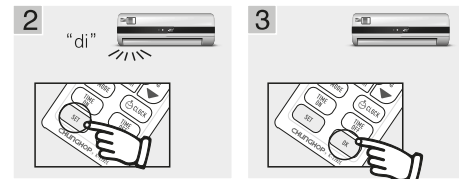
Please note that the remote must be programmed with your A/C for this function to work. The remote must also be turned on which you can determine by whether or not a temperature is displayed on the remote screen, if it is not turned on then please press the power button.

Please note using the TIME ON and TIME OFF button may not work for all A/Cs.

- Point the remote at the A/C and Press the "TIME ON" or "TIME OFF" button depending on your desired function, the remote screen will then display "TIME ON01" or "TIME OFF01" and your AC should respond by flashing a light or making a beep sound. "01" indicates the AC is set to turn on/turn off automatically in 1 hour.
- Press the same button again to increase the number of hours. The maximum is 15 hours and if you press the same button once more after it shows "TIME ON15" or "TIME OFF15" on the screen it will turn off this function.

#### CONTACT US:

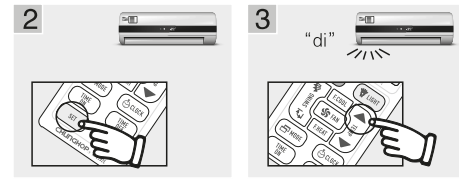
E-Mail: [info@chunhop.com](mailto:info@chunhop.com)  
<http://en.chunhop.com>



### METHOD C: BRAND CODE

Manually search only the codes relevant to your brand one by one

- Lookup your brand in the code list to determine the relevant codes.
- Point the remote at your AC and hold down the "SET" button for 3 seconds until you see a code start flashing in the bottom right hand corner of the screen.
- Use the "TEMP +" or "TEMP-" to adjust the code to the first relevant code and the A/C will respond if it is compatible. If the A/C responds press the "OK" button to select the code.
- If the remote does not control the A/C properly or your AC does not respond, please repeat steps 2 and 3 using the next relevant code.



### METHOD D: SEARCHING THE CODE MANUALLY

- Point the remote at your AC and hold down the "SET" button for 3 seconds until you see a code start flashing in the bottom right hand corner of the screen.
- Press "TEMP+" or "TEMP-" button once each time, and pay attention to the A/C at the mean time. The A/C will respond if it is compatible.
- If the A/C responds, press the "OK" button to select the code.
- If the remote does not control the A/C properly or your A/C does not respond, please repeat step 2 and 3.



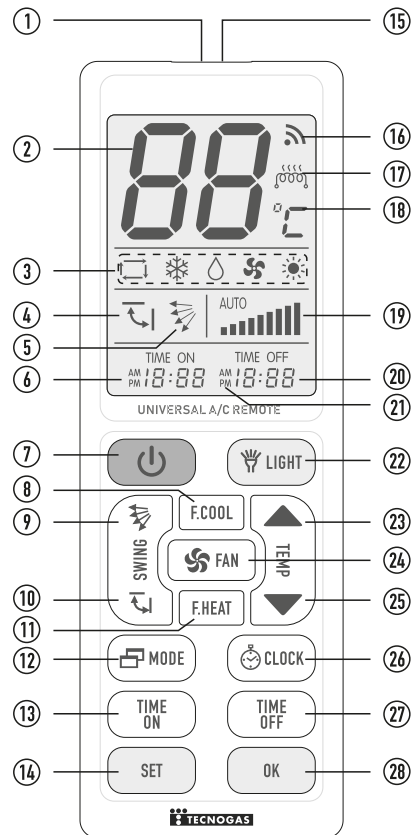
UNIVERSAL AIR CONDITIONER  
REMOTE CONTROL

## USER INSTRUCTION

### DESCRIPTION

Elegant universal A/C remote control with an LED light and extra-large backlight LCD screen. Due to the huge code base, it is compatible with most of the new and old models of the most brands of air conditioners in the market. With a simple and easy setup, the large buttons are more ergonomically designed. The universal remote control has a high-end design panel and it supports more functions of original remotes. There is no need to reset the remote control after replacing batteries thanks to the automatic power-off memory feature. It will give you an amazing experience and let you enjoy the smart life initiated from the new technology!

### COMPONENTS



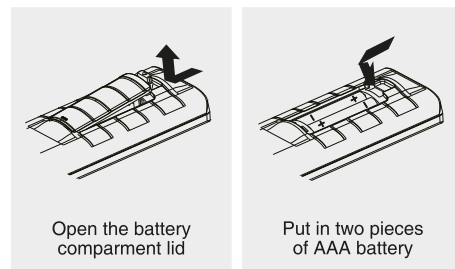
### COMPONENTS:

- 1: Infrared Signal Transmitter Port
- 2: Temperature Display
- 3: Mode Option (Auto/Cooling/Dehumidifying/Ventilation/Heating)
- 4: Automatic Wind Direction
- 5: Manual Wind Direction
- 6: Timer ON and Clock Display
- 7: Power ON/OFF
- 8: Fast Cool
- 9: Manual Wind Direction
- 10: Automatic Wind Direction
- 11: Fast Heat
- 12: Change Mode
- 13: Timer On
- 14: Setting
- 15: LED Light
- 16: Signal Display
- 17: Electric Assisted Heating
- 18: Celsius Degree
- 19: Fan Speed Display
- 20: Timer OFF and Code Display
- 21: Code Lock Icon
- 22: LED Light
- 23: Temperature +
- 24: Fan Speed
- 25: Temperature -
- 26: Clock
- 27: Timer OFF
- 28: OK

### PRODUCT OPERATIONS

#### ● Installing the batteries

This remote control is operated by two pieces of AAA battery. It will be ready for use after batteries correctly installed. It is recommended that removing the batteries when you are not going to use it for a long time, just in case of any damage by battery leakage.



### SETUP METHODS

This product can be used directly for: GREE (YBOF2), Mitsubishi 388, Midea, Toshiba, Chunlan, Haier, Hualing and so on. If it's not working, please try to do the setup with one of the methods below:

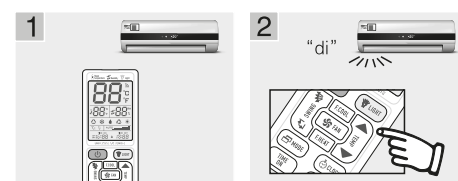
### METHOD A: BRAND BUTTON

Automatically searches only the codes relevant to your A/C brand

- Point the remote at your A/C and hold down the button which corresponds with your brand as per the "Corresponding buttons" below. For example, the TIME OFF button for Fujitsu A/Cs. If your brand is not listed, please refer to Method B & C.
- Immediately as your A/C responds (e.g. makes a beep sound) release the button. This may take up to approximately two minutes. If the remote does not control the AC properly or your A/C does not respond please refer to Method B & C.

#### Button Brand Corresponding Table

ON-OFF	TEMP	TEMP	FAN
GREE/HAIER	MIDEA/TOSHIBA/CHANGHONG	SHARP/KELON	MITSUBISHI/OTHERS
MODE	SWING	SWING	TIME ON
LG/SAMSUNG/MI/SKYWORTH	HITACHI/PANASONIC	SANYO/HISENSE	CHIGO/DAIKIN
TIME OFF	F.COOL FAST COOLING	F.HEAT FAST HEATING	
FUJITSU/CARRIER	CHUNLAN/AUX	SHINCO/AUCMA	



### METHOD B: AUTOMATIC SEARCH

Automatically search every code

- Point the remote at your A/C and hold down the "SET" button for approximately 6 seconds then release. You will then see the remote start to scroll through codes 001 to 999 in the bottom right hand corner of the screen.
- Hover your finger over the "OK" button and immediately as your A/C responds (e.g. makes a beep sound) press the "OK" button twice.
- If the remote does not function as expected, repeat steps 1 and 2 again and the remote will search for another code that connects the remote with your A/C. Otherwise try Method C.

### ADDITIONAL FUNCTIONS OF THE REMOTE CONTROL

#### ● RESTORE FACTORY SETTINGS

Press the "SET" + "FAN" buttons at the same time for approximately 3 seconds until the entire remote screen flashes to restore factory settings.

#### ● FAST COOLING AND HEATING FUNCTION

**FAST COOLING**  
Point the remote at the A/C and press the "F.COOL" button. This will change the mode to cooling, temperature to 21 degrees, fan speed to strong and direction to automatic.

**FAST HEATING**  
Point the remote at the A/C and press the "F.HEAT" button. This will change the mode to heating, temperature to 27 degrees, fan speed to strong and direction to automatic.

#### ● CLOCK FUNCTION

- Hold down the "CLOCK" button for approximately 3 seconds until the time on the screen starts flashing.
- Use the "TEMP+" and "TEMP-" buttons to adjust the time, please note if you hold down the button it will scroll faster.
- Press the "CLOCK" button to confirm the adjusted time.

#### ● TIMER FUNCTION

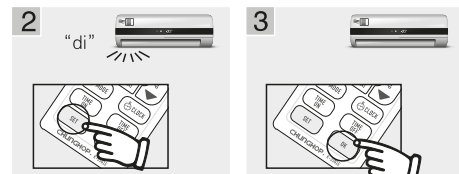
Please note that the remote must be programmed with your A/C for this function to work. The remote must also be turned on which you can determine by whether or not a temperature is displayed on the remote screen. If it is not turned on then please press the power button.

Please note using the TIME ON and TIME OFF button may not work for all A/Cs.

- Point the remote at the A/C and Press the "TIME ON" or "TIME OFF" button depending on your desired function, the remote screen will then display "TIME ON01" or "TIME OFF01" and your AC should respond by flashing a light or making a beep sound. "01" indicates the AC is set to turn on/turn off automatically in 1 hour.
- Press the same button again to increase the number of hours. The maximum is 15 hours and if you press the same button once more after it shows "TIME ON15" or "TIME OFF15" on the screen it will turn off this function.

#### CONTACT US:

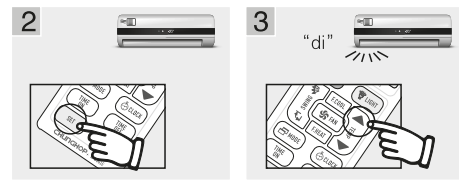
E-Mail: info@chunhop.com  
http://en.chunhop.com



### METHOD C: BRAND CODE

Manually search only the codes relevant to your brand one by one

- Lookup your brand in the code list to determine the relevant codes.
- Point the remote at your AC and hold down the "SET" button for 3 seconds until you see a code start flashing in the bottom right hand corner of the screen.
- Use the "TEMP +" or "TEMP -" to adjust the code to the first relevant code and the A/C will respond if it is compatible. If the A/C responds press the "OK" button to select the code.
- If the remote does not control the A/C properly or your AC does not respond, please repeat steps 2 and 3 using the next relevant code.



### METHOD D: SEARCHING THE CODE MANUALLY

- Point the remote at your AC and hold down the "SET" button for 3 seconds until you see a code start flashing in the bottom right hand corner of the screen.
- Press "TEMP+" or "TEMP-" button once each time, and pay attention to the A/C at the mean time. The A/C will respond if it is compatible.
- If the A/C responds, press the "OK" button to select the code.
- If the remote does not control the A/C properly or your A/C does not respond, please repeat step 2 and 3.